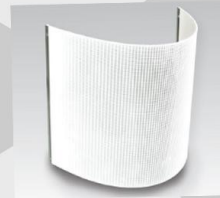


CPDLIGHTING

FLEXIBLE LED LIGHT PANEL

LED LIGHT PANELS ▲

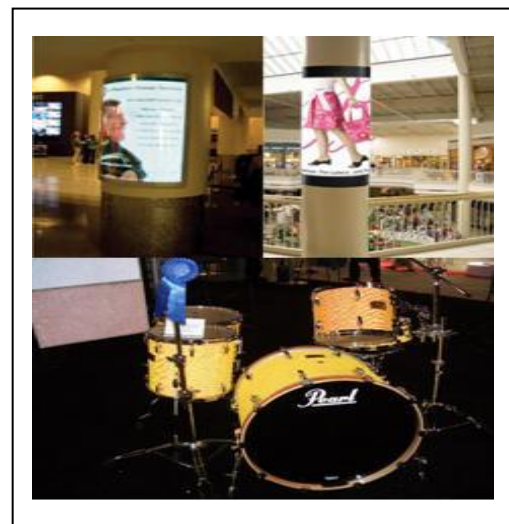
2mm LED Light Panel
Frameless LED panel, Custom Size.



The unmatched light quality of 2mm LED light panel is flexible, lightweight, and easy to manipulate. The panel is only 3/32" (2 mm) thick, with aluminum frame. It is so thin; it can curve to fit the architecture of a space. Its low weight and thickness makes shipping and installation a breeze. Plus, CPD Flexible panel provides the bright, even, lasting light.

FEATURES

- ◆ Flexible, with the ability to curve
- ◆ Lightweight
- ◆ Available in custom sizes
- ◆ High brightness
- ◆ Long LED lifespan
- ◆ Energy saving and maintenance free
- ◆ Superior consistent light quality
- ◆ Advanced 3-year warranty



SPECIFICATION			
Input Voltage	12 volt DC		
Wattage	1 0.8W per 40 inches x 2 sides		
Color Temperature	2700-3200 K	4000-5000 K	6000-6500K and etc.
Wire size	20AWG (Pull-resistant design wire), 2 wires		
Shape and size	Can be customized any square shape		
Thickness	2mm		
Weight	2.4kgs per sq m		
Wire coming from panel	3" DC wire + 10' extension cord		
Material Front Side of Panel	Clear pure virgin acrylic panel or with diffuser		
Material Back Side of Panel	High quality reflecting sheet		
Catalog Designation	Non- All custom shapes, no stock items		
Dimming Capacities	12V/24V-72A (Plug and play dimmer)		
Power Supply	UL Listed DC adaptor		
Connection from Panel to Power Supply	Plug & Play. Male plug on power supply / Female plug on panel (2.1 / 5.5 mm barrel plug)		